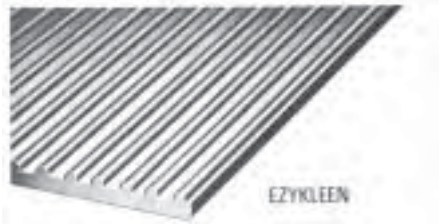




## ROLL MATTING



AVAILABLE IN BLACK OR BROWN

**EZYKLEEN** — Its round-rib corrugations run lengthwise, providing an open construction which prevents dirt from sticking or blocking the surface. It is easily cleaned with soap and water.  $\frac{1}{8}$ " thick in 24", 36" and 48" widths, in 35-yard rolls.



COLOR : BLACK ONLY

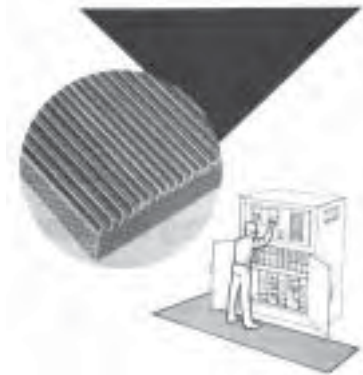
### HEAVY CORRUGATED RUBBER

**FEATURES:** A solid, corrugated rubber matting construction designed for extra heavy duty service. Has a smooth-back finish.

**FUNCTION:** To help protect floors in applications which warrant a thickness greater than  $\frac{1}{8}$ ".

**BENEFITS:** Easily beveled and perforated for entrance mats. Offers greater thicknesses providing extra long life, particularly where heavy wear and traffic conditions occur.

**APPLICATIONS:** Commonly used in heavy traffic areas. Also used on hard floors, aisles, and behind counters to reduce fatigue.



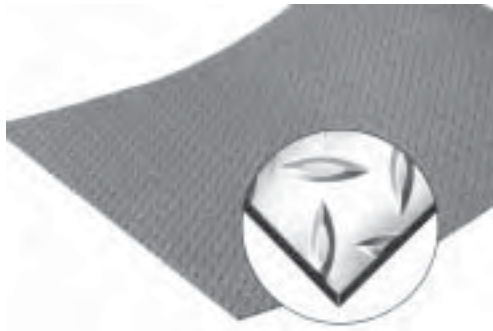
### A.S.T.M. SWITCHBOARD RUBBER MATTING

**FEATURES:** A corrugated all-rubber insulating matting specially compounded for use as a floor covering for protection of workers.

**FUNCTION:** It is expressly designed to protect workers against electrical shock when working around high voltage apparatus within the product specifications.

**BENEFITS:** Conforms to ASTM D178-88 Type 1 Class 2. Proof tested at 20,000 volts AC. Maximum recommended use voltage is 17,000 volts. Dielectric strength 30,000 volts AC. Permanently branded on the back. Refer to specifications for additional information.

**APPLICATIONS:** Recommended for use near electrical machinery such as fuse boxes, control panels, and heavy machinery when used as specified by ASTM D178-88.



**DIAMOND SWITCHBOARD NEOPRENE MATTING**

**INSULATING FOR HIGH VOLTAGE APPLICATION**

**MILITARY SPECIFICATION:** Conforms to MIL SPEC. MIL-M-15562F Type III dated 12/7/77 as amended. This specification is approved for use by interested Commands of the Department of the Nav and the Marine Corps and is available for use by all other Departments and Agencies of the Department Defense.



**PYRAMID RUNNER**

**FEATURES:** A uniquely engineered non-directional pattern combined with a special formulation resulting in an exceptionally slip-resistant vinyl runner.

**FUNCTION:** Primarily to be used where safety and floor protection are of major importance.

**BENEFITS:** Resists many oils, greases, and fats. Exceptional wear and long life. Reduces maintenance costs. Offers slip resistant pattern for greater safety. Meets flammability test requirements of Motor Vehicle Safety Standard No. 302 (49 CFR 571.302)

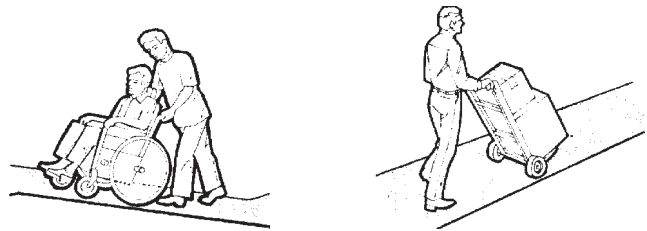
**APPLICATIONS:** Ideal for ramps, airports, walkways, factories, restaurants, office buildings, and department stores.

**COLORS:** Black, Brown, White

**SIZES:** 1/8" x 36", 1/8" x 48" White in 36" only

**ROLL LENGTH:** Approx. 25 yds.

**WEIGHT:** 7.9 lbs./sq. yd.



**TUFF-SPUN SPONGE VINYL MATTING**  
*for control of... NOISE... FLOOR WEAR... BREAKAGE*

**COLORS:** BROWN - BLACK  
**THICKNESS:** 1/4" & 3/8"

**ANTI-FATIGUE MATTING**

A COMFORTABLE BARRIER BETWEEN FLOORS AND WORKERS FEET. VINYL SPONGE REDUCES FATIGUE; KEEPS EMPLOYEES OFF COLD HARD FLOORS. RIB TOP, SMOOTH BACK, VINYL SPONGE CENTER, ONE PIECE MATERIAL, NOT LAMINATED ; WEIGHS 1/3 AS MUCH AS SOLID MATTINGS.

ROUNDED EDGES LAY FLAT, WON'T CURL  
 AIDS IN NOISE CONTROL  
 CUSHIONS DROPPED TOOLS AND SUPPLIES



## "FOOT COMFORT" ANTI-FATIGUE MATS

Tired feet, aching backs or sore legs impare performance. Fatigue can cause ill temper, carelessness and inefficiency. This unique construction prevents strain by distributing body weight evenly. Will pay for themselves through increased energy, morale and productivity. Meets Fed. Specs. ZZ-M-42.

Reduces fatigue at factory and office machines; behind counters; check-outs; for computer operators, beauticians, dry cleaners, florists, hotel clerks, supermarkets, ministers, bank tellers; stores, offices, factories and institutions.

Extra thick 3/8" foam rubber base bonded underneath wear-resistant 3/32" rubber flooring gives hours of comfort and durability. The sponge rubber contains millions of tiny air bubbles; you actually walk above air. The sponge is sealed to prevent absorption of water. Provides an effective insulation against cold floors. Edges are beveled to help prevent tripping and improve appearance. (Not for kitchen use.)

Made in the U.S.A.

3/32" rubber top with 3/8" beige sponge rubber base  
Colors: See Below

STANDARD SIZES:

Style	Approx. Size	Wt.
"E"	18" x 30"	7 lbs. ea.
"F"	18" x 48"	11 lbs. ea.
"H"	36" x 64"	29 lbs. ea.
"J"	24" x 36"	11 lbs. ea.

\*RUNNERS—Made to Order—Any length up to 30 feet in one piece.

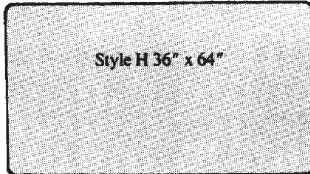
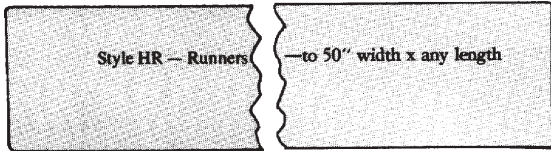
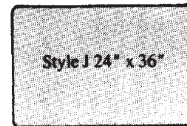
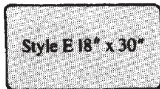
- HR Runner—18" wide or less 1.8 lbs. per sq. ft.
- HR Runner—19" to 24" wide 1.8 lbs. per sq. ft.
- HR Runner—25" to 36" wide 1.8 lbs. per sq. ft.
- \*HR Runner—37" to 50" wide 1.8 lbs. per sq. ft.

\*(Width over 36" made in colors 4 and 653 only.)



**COLORS:** #4 BLACK/WHITE, #711 GRAY, #30 BROWN, #115 TAN, #728 WHITE/BEIGE, #60 RUST RED, #627 CHOCOLATE, #777 BIRCH, #653 GREEN, #70 BLUE

Pick the size that is best for your application

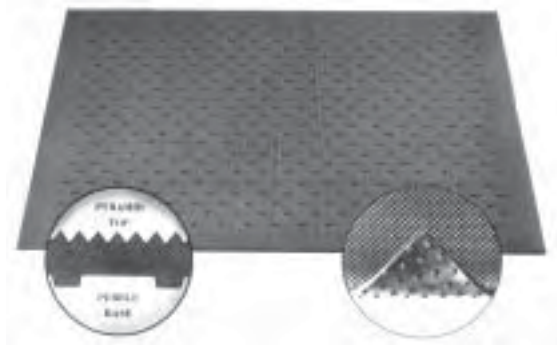


Each mat is warranted on a pro-rated basis for five years against normal usage and wear. However, these precautions must be taken so as not to void your warranty:

- DO NOT** wear high heeled shoes on the mat.
- DO NOT** use chairs, stools or tables on the mat.
- DO NOT** use castered wheels on the mat.

## ENTRANCE MATS

### PYRAMID ENTRANCE MAT



- Select from five standard colors
- All-rubber construction; no wire to break or bend
- No separate attached nosings to bend
- Square or bevelled edges are integral part of mat
- Easy to handle; rolls up either direction for cleaning
- Custom-made to fit areas of every shape

Mats custom-made to conform to any area. Pyramid Top cross-corrugated design helps prevent slipping; wipes shoes regardless of traffic direction. Pebble Base raises mat off floor; allows drainage of water, circulation of air.

**SELECT FROM FIVE STANDARD COLORS  
BLACK-BROWN-SAND-RED-GREY**

### VINYL LINK MATS



Vinyl Link Mats retain their vibrant colors, are reversible, give years of service. Available in solid colors, standard field designs or special designs. Letters or numerals can be woven in Mats. Furnished with matching or contrasting color nosing attached on all sides, 1 1/2" stub for recess use (or 2" bevelled for surface use.)

Wires should run the short dimension of mat; same cleaning action whether traffic moves parallel or perpendicular to wires. Rust resistant spring steel wire is standard; (brass wire at extra cost). Maximum size 8' x 16', (maximum wire length 8'). Large areas should be made in sections.

**Select from standard solid colors, plus White**

**COLORS: BROWN-RED-GREEN-GRAY-DK. BLUE-SAND-TERRA COTTA-MAROON-YELLOW-BLACK-LT. BLUE**

### COCOA MAT - VINYL BACK



Vinyl-Back Cocoa Mats in Natural Golden Tan color provides safe leak-proof brush action cleaning. All natural fibers from the outer husk of the coconut are fused into a vinyl backing by a unique process to create an extremely long wearing and efficient shoe cleaning surface. The vinyl-back allows trimming to fit any size or shape entrance; is skid proof, lays flat, stays in place. Tan color is colorfast. Ideal for use in recesses; cropped bristles give excellent scraping action. These mats clean grit and moisture from shoes, dry rapidly; won't mildew or rot. Mats do not generate static electricity. Mats can be easily vacuumed or washed with mild soap. Meets Department of Commerce Flammability Specs. DOC-FF-1-70; classified as a "B" rating under Test ASTM-E84-80. Satisfactory for golf-shoe traffic.



**CARPET MATS**

**MATS & RUNNERS**

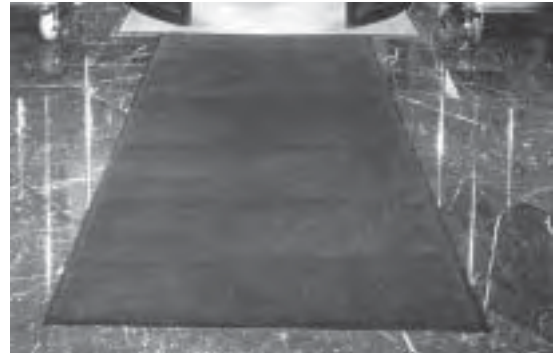
**Colors:** Red - Pebble Brown - Dark Brown - Charcoal - Blue

SPECTRA-DELUXE MATS—approx. 1" vinyl border on all four sides.

Stock No.	Approx. Size	Std. Ctn.	Weight
6SD23	24" x 36"	1 per ctn.	5 lbs.
6SD34	36" x 48"	1 per ctn.	9 lbs.
6SD35	36" x 60"	1 per ctn.	13 lbs.
6SD36	36" x 72"	1 per ctn.	14 lbs.
6SD46	48" x 72"	1 per ctn.	18 lbs.
6SD48	48" x 96"	1 per ctn.	22 lbs.
6SD310	36" x 120"	1 per ctn.	21 lbs.
6SD410	48" x 120"	1 per ctn.	29 lbs.

SPECTRA-DELUXE RUNNERS—36", 48" or 72" wide— available in cut lengths or full rolls of approx. 60 ft. Approx. 1" vinyl border on both long edges. (Edging can be attached to cut ends.)

Stock No.	Approx. Width	Approx. Roll Size	Wt. Per Lin. Ft.
6SDR36	36"	60 ft.	2.3 lbs.
6SDR48	48"	60 ft.	3.0 lbs.
6SDR72	72"	60 ft.	4.6 lbs.



Plush and durable, this Spectra-Deluxe Olefin cut pile carpet helps wipe shoes clean at the entryway. One of the longest wearing carpet surfaces. Benefit from these many features of Spectra-Deluxe and save money on maintenance costs.

- 100% continuous filament Olefin pile.
- Solution dyed to resist fading.
- Traps over one gallon of water per square yard; dries up to four times faster than conventional nylon mats.
- Solid vinyl backing provides extra floor protection.
- Repels stains to assure the mat's original beauty.
- Deep pile attracts dirt and grime.
- Cleans easily with vacuum or hose.
- Made in the U.S.A.
- Meets Dept. of Commerce Specs. DOC-FF-1-70.

**CUSTOM LOGO CARPET MATS**

WE OFFER SEVERAL DIFFERENT TYPES OF CUSTOM LOGO MATS TO FILL A WIDE RANGE OF NEEDS

- **CUSTOM INLAID**
- **FLOCKED DESIGN**
- **INK JET**



**SIZES:** 2' x 4'      4' x 6'  
 3' x 4'      4' x 8'  
 3' x 5'      3' x 10'  
 3' x 6'      4' x 10'

**PLUS CUSTOM SIZES**

## RUBBER STAIR TREADS

### LO-DISC TREADS

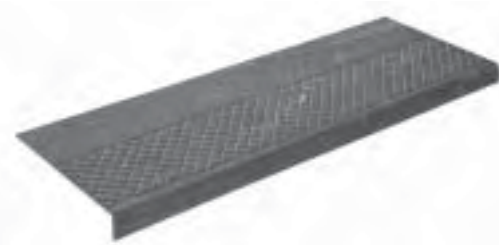


Lo-Disc Stair Tread has  $\frac{3}{4}$ " diameter discs, raised .025"; is an economical, attractive long wearing resilient rubber tread; added gauge at front edge. Tapered discs are easier to clean. An excellent tread for lighter traffic stairways. Meets Federal Spec. RR-T-650E and ZZ-T-001237 (GSA-FSS). Install with Neoprene Contact Flooring Adhesive.

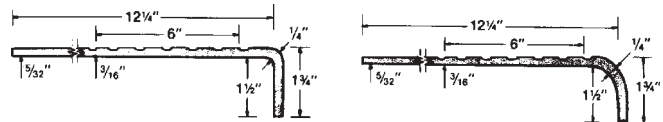
MARBELIZED & SOLID COLORS AVAILABLE



### DIAMOND DESIGN



Half diamond design, half smooth; a longer adjustable nose to fit pan filled steps, molded concrete or terrazzo steps. Use in commercial, industrial, office or institutional building. Diamond Design (6" deep) covers impact area of pedestrian traffic. Helps make steps safer. Meets Federal Specs. RR-T-650E and ZZ-T-001237 (GSA-FSS). Install with Neoprene Contact Adhesive and Epoxy Nose Caulk.

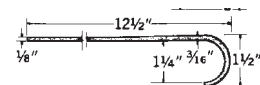
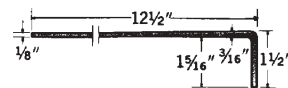


### SMOOTH DESIGN

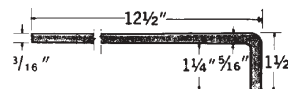


Smooth flat surface molded rubber stair treads offer long wear; easy cleaning; reduce noise; marbelized colors show less wear. Four styles to fit almost any stairway. Made of same resilient compound as rubber tile and sheet rubber flooring.

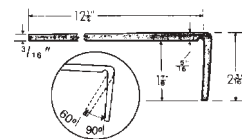
SERVICE WEIGHT



HEAVY DUTY



HEAVY DUTY-LONG NOSE



MARBELIZED COLORS: #40 BLACK, #11 GRAY, #30 MAHOGANY, #85 BEIGE, #58 OATMEAL, #20 RED, #27 WALNUT, #77 BIRCH, #53 GREEN, #70 BLUE, #66 SLATE.

SOLID COLORS: #277 BEIGE, #227 BROWN, #207 DK CHOCOLATE, # 272 NAVY BLUE, #220 RED, #211 GRAY, #280 BLACK, #290 SLATE

#### FLAME SPREAD CLASSIFICATION

All molded rubber stair coverings, molded rubber floor coverings, and Koroseal Vinyl stair coverings have been tested in accordance with and meet or surpass the listed requirements of the following tests;

UL 992 Chamber Test	2.0 or less
ASTM-E84 Tunnel Test	75 or less
NFPA 253 C.R.F. Test	.9 Watts/square centimeter or more

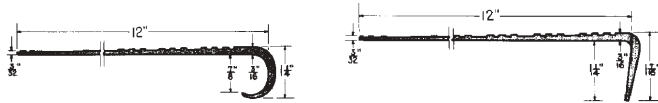
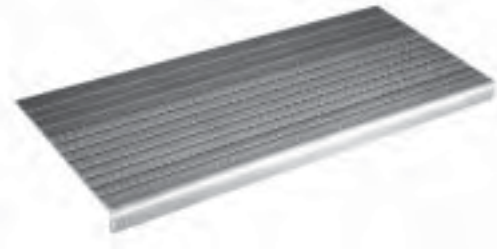
**KOROSEAL® VINYL STAIR TREADS**

A distinct innovation in stair coverings made of the most famous name in vinyl, "Koroseal", to give you long wearing stair treads that have surface quality and color throughout the thickness; are nonporous; long wearing; abrasion resistant and easy to clean. For commercial, industrial or institutional use. All Koroseal Vinyl Stair Treads meet Federal Specs. ZZ-T-001237 (GSA-FSS).

**COLORS: BROWN, BLACK, SAND, GRAY, SLATE**

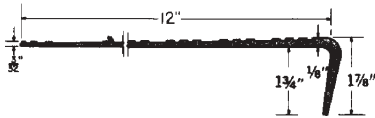
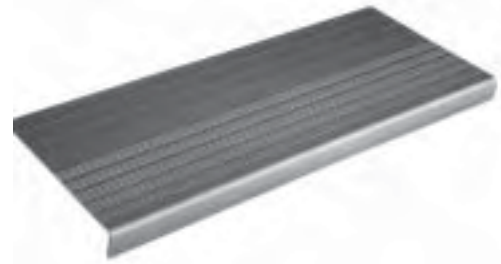
**#375**

Designed for use in apartments, urban renewal housing, housing for the elderly and housing projects. Lower initial cost, ease of installation, ease of cleaning and long service appeals to owner and builder. Extra thick at front edge. Meets Fed. Specs. RR-T-650E Type B.



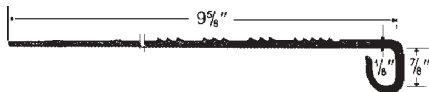
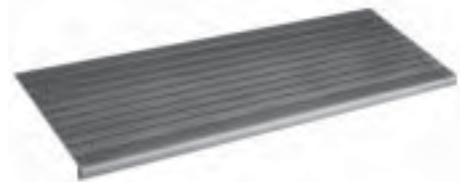
**#355**

Lower cost production for multi-family dwellings, apartment houses, low income housing. This tread with extra long nose is designed to use on a 2" x 12" plank step or molded concrete step. Heavier thickness at front "wear-area". Treads are easy to install; flat rib surface is easy to clean. Meets Fed. Specs. RR-T-650E Type B.



**#300**

Lowest cost protection for stairs of homes, duplexes and apartments. Modern beauty, economy, durability and safety with this tread. Features extra heavy snap-on nose that fits only square or curved nose wood steps that are between 3/4" and 1 1/8" thick. (Will not fit concrete steps.)



**TECHNICAL ASSISTANCE**  
**PROBLEM AREAS? CALL US FOR ASSISTANCE IN CHOOSING THE BEST SUITED MATERIAL, FOR STAIRWAYS, ENTRANCES, KITCHENS ETC. TAKE ADVANTAGE OF OUR YEARS OF EXPERIENCE. WE CAN SUPPLY MANY OTHER PRODUCTS NOT LISTED HERE.**