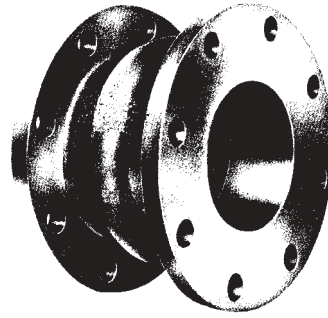


Potomac RUBBER COMPANY INC.

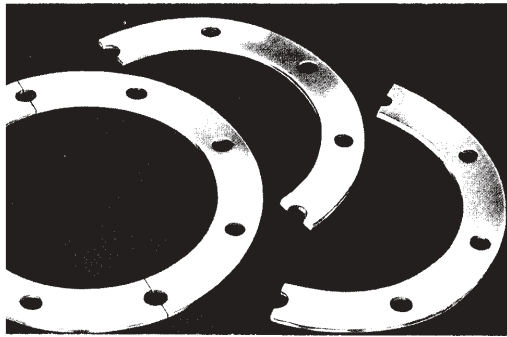
EXPANSION JOINTS

In a small amount of space, expansion joints are able to absorb relatively large degrees of motion caused by pipe expansion and contraction. Expansion joints are used in many industries as flexible connections in pressure and vacuum lines. The flexible arch located in the body between the flanges responds to the expansion and contraction of the piping. The Expansion Joints listed here are available in all Standard Pipe Sizes from 1" to 72" I.D.

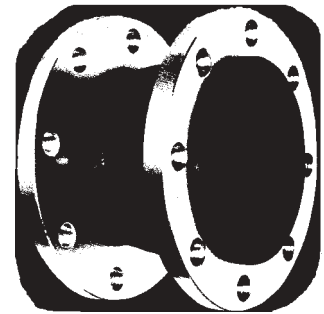
Expansion Joints are able to absorb vibration and sound as well as prevent equipment damage from pipe motion. In this respect they overlap flexible pipe in function when operating within the pressure and temperature ranges for which they are intended. Flexible pipe is capable of handling the extreme limits of pressure and temperature dependent upon the amount of space available. Consult with your PRC representative concerning the correct unit for your needs.



STANDARD Spool-type Expansion Joint. with Straight through tube, Single arch and flanged ends.

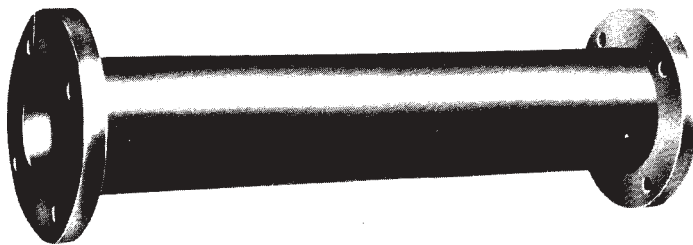


RETAINING RINGS

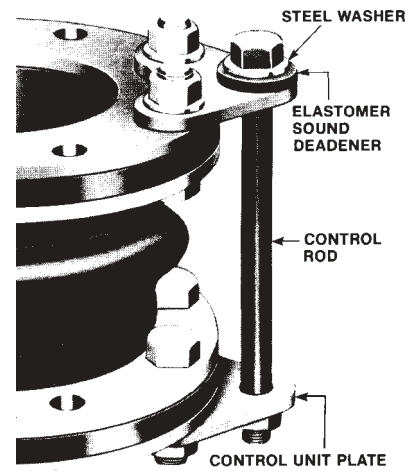


SPHERE TYPE UNIT

USED FOR: Connecting piping of equal diameter for handling fluid, vapor, air, exhaust steam, brine and other general applications involving corrosive and abrasive services, and to eliminate vibration, stress and noise.



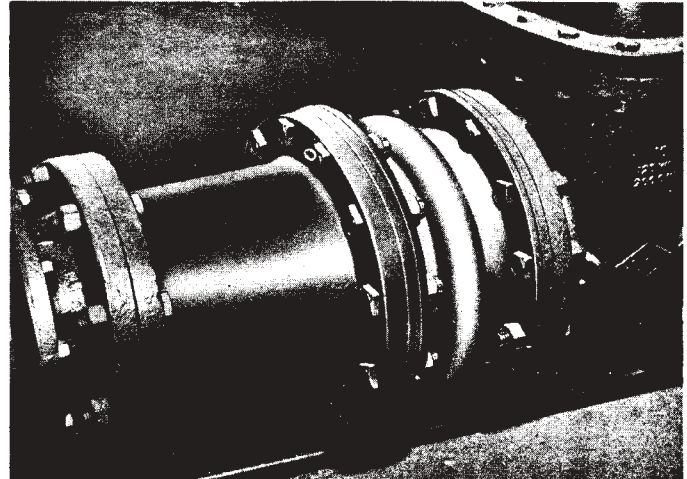
Rubber pipe is constructed with a smooth inside lining especially compounded from high-tensile, abrasion-resistant rubber. The pipe walls are made from multiple plies of tough fabric, impregnated with specially designed compounds. Spiraled steel wires are embedded in the pipe walls from flange to flange during construction for extra strength. The cover is made of a layer of age resistant rubber material.



CONTROL RODS
FOR CRITICAL APPLICATIONS

EXPANSION JOINTS

Absorb motion from Expansion and
Contraction of Pipes and Equipment
Allow for Misalignment



A typical expansion joint installation is pictured above. This expansion joint absorbs differentials in motion, expansion and contraction between the two pipes.

CHEMICAL PROCESSING INDUSTRY

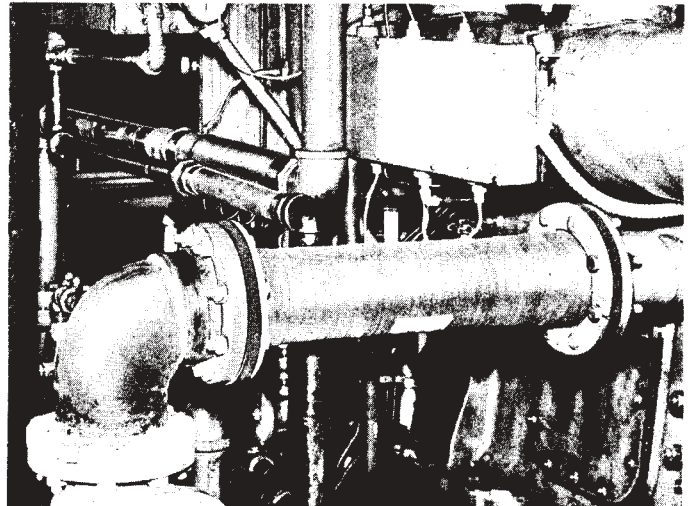
**HEATING, VENTILATING AND
AIR CONDITIONING INDUSTRY**

MARINE INDUSTRY

POWER GENERATION INDUSTRY

SEWAGE DISPOSAL AND

WATER TREATMENT INDUSTRY

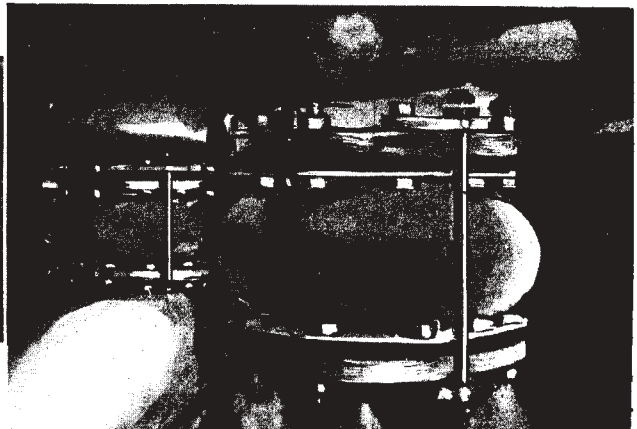
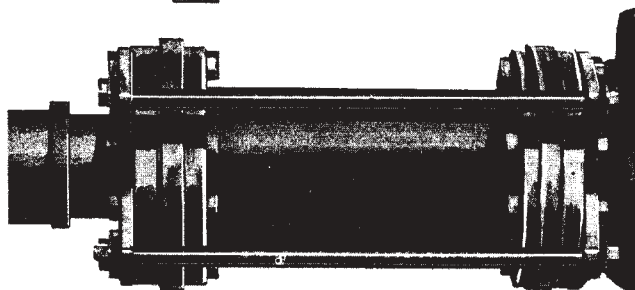


Expansion joint installation is pictured above. These flexible connectors eliminate irritating noise and vibration and reduce maintenance cost.

- ABSORB SOUND • ELIMINATE VIBRATION
- ALLOW FOR MISALIGNMENT
- PROTECT PUMPS • REDUCE WATER HAMMER



ISOLATED ANCHOR UNITS



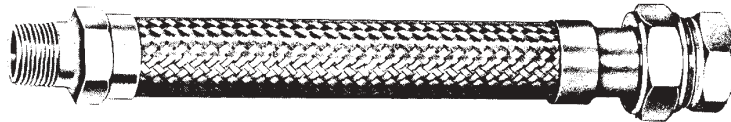
METAL EXPANSION JOINTS & CONNECTORS

STAINLESS STEEL OR BRONZE

Brass hex nipples each end.



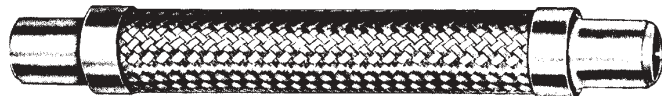
Brass hex nipple one end, brass hex female union other end.



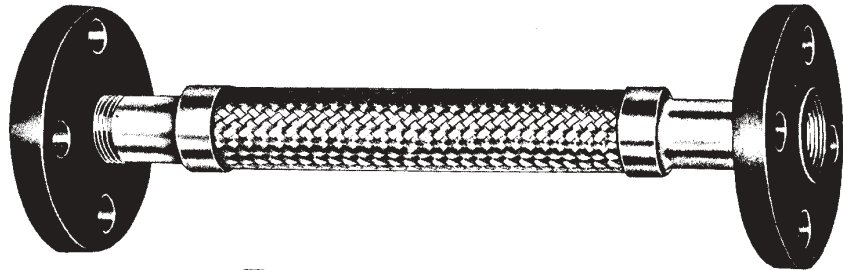
Steel pipe nipple each end.



Welding nipple each end.

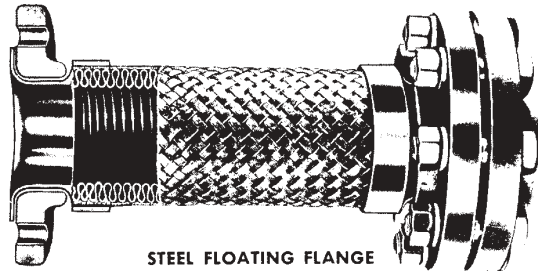


Rigid flange each end.



Size Range 1/4" through 16" I.D.

For pump connections, heating installations, and use wherever heavy duty flexible connectors are required.



STEEL FLOATING FLANGE

INDUSTRIAL TEFLON HOSE ASSEMBLIES

- TEFLON INNERCORE EXTRUDED TO HIGHEST QUALITY STANDARDS
- BRONZE OR STAINLESS STEEL BRAID
- SWEDGE FITTINGS FOR MAXIMUM SERVICE PERFORMANCE
- END FITTINGS IN MALE PIPE OR JIC FEMALE SWIVEL



Male Pipe to Male Pipe (NPT)